

# *Rising* ABOVE THE **PANDEMIC**



**RUTLEDGE**  
CANCER FOUNDATION

ANNUAL  
REPORT  
2020



# OUR MISSION



## EASE THE IMPACT

Served over **1,168** patients and family members in 2020, in spite of shut downs and social distancing.



## RAISE THE RATE

Raised **\$439,171** in the midst of a global pandemic and economic uncertainty, to further research and complete development of new therapies.



## FIND A CURE

Funded **\$182,823** in patient programs and research aimed at finding a cure for solid tumor cancers.



# TABLE OF CONTENTS

Mission Statement .....2

Letter from the Board President.....4-5

Leadership.....6-7

Ease the Impact .....8-11

Raise the Rate.....12-13

Find a Cure.....14-15

The Cure Club.....16

An Evening with RCF .....17

2020 Contributions .....18-20

Looking Back on 2020.....21

Financial Report .....22-23

## DID YOU KNOW?

- Rutledge Cancer Foundation serves adolescent and young adult (AYA) cancer patients from age 11 to 39.
- Cancer is the leading disease-related cause of death in young adults age 15 to 39, increasing over 50% in the last 40 years.
- Approximately 89,500 AYAs are diagnosed with cancer each year.
- AYAs are 8 times more likely to be diagnosed with cancer than children under 15.
- Cancer survival rates for AYAs have not changed in over 30 years.
- Less than 2% of AYAs with cancer participate in clinical trials.
- AYAs are the most under-insured or uninsured group in the United States.



## KYLE KIGHT:

Rutledge Cancer Foundation began 2020 with much anticipation and excitement. Marking the 10th anniversary since Carley's original diagnosis of Ewing sarcoma, we looked forward to a Gala celebrating all that has been accomplished with those who have partnered with us in countless ways over the past decade, as well as celebrating the progress we have made in research for new therapies and treatments.

Yet, as it did for so many people, COVID-19 quickly dashed our plans and created new challenges that could have never been imagined. Our planned gatherings and patient events were cancelled, while research became more difficult in a socially distanced world.





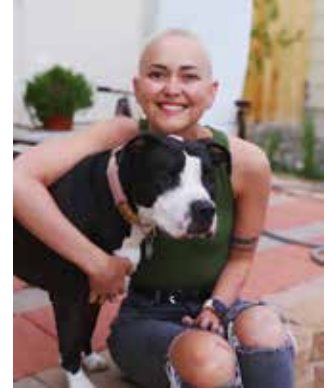
## BOARD PRESIDENT

Unfortunately, rather than stopping for a global pandemic, the issues confronting patients and their families were only made worse. Cancer is unrelenting, but what I am most proud of as a member of the RCF family is that our staff, volunteers and donors were equally unrelenting. They did not dwell on the disappointment of what could have been but focused their attention on what needed to be. During the year, RCF was able to:

- Provide PPE gift bags, including masks and hand sanitizer, along with food and gas gift cards, to 648 patients.
- Supply much needed gift cards to JPS, allowing patients to continue to travel to and from their treatment appointments.
- Help fund the FitSteps for Life medically supervised fitness programs, which switched to an on-line platform with 64 participants.
- Support Moncrief Cancer Institute's fertility preservation program service to 30 patients.
- Offer numerous "COVID-friendly" socially distanced events—including Zoom chats, pizza drive-throughs and Boo at the Zoo drive-through—that were attended by 336 patients.

All of these services and programs matter. They make a difference in the lives of people, and

none of it would be possible without you, our faithful friends, donors and volunteers. Finally, a recap of 2020 for RCF would be incomplete without mentioning Carley. Ten years after her initial diagnosis, the news of her relapse of Ewing sarcoma in September was heart-breaking to all of us. As the dad of a Ewing's survivor, it hit particularly close to home. However, as RCF did with COVID, the entire Rutledge family responded with a focus on what needed to be done and continued to provide inspiration to us all with their love for each other and fighting spirit. It is a stark reminder of why we do what we do.



We at RCF enter 2021 with as much focus and hope as we have ever had to Ease the Impact, Raise Survival Rates and Find a Cure for the thousands of patients who deserve better than the same chemotherapy and radiation treatments of the last 35 years. Thank you for all you have done to help us pursue our mission and for being part of the journey going forward.

Until we find a cure,

Kyle Kight  
Board President

## STAFF LEADERSHIP

---



**Laura Rutledge**  
Executive Director



**Carolyn Roberts**  
Director of Development



**Brenda Lammers**  
Business Manager



**Adrienne Stephens**  
Director of Marketing  
and Special Events

## EXECUTIVE BOARD

---



**Kyle Kight**  
President



**John Rutledge**  
Treasurer



**Donna Craft**  
Secretary



## BOARD MEMBERS

---



**Harshal Broker, M.D.**  
Vascular Surgeon



**Angela Donahue**  
Woman's Board,  
Cook Children's Medical Center



**Chris Kroeger**  
Chris Kroeger Consulting, LLC;  
Adjunct Professor at TCU



**Bill Penny**  
Holland, Johns & Penny, LLP



**Tamara Reese**  
Community Volunteer,  
Owner of T's Pantry



**Grant Rutledge**  
Financial Analyst at  
Lockheed Martin



**Caroline Samis**  
Vice President,  
Frost Wealth Advisors



**Lisa Williams Sarvadi**  
Community Volunteer





## EASE THE IMPACT

In 2020, in spite of shut downs and social distancing, RCF was able to serve over 1,168 patients and family members with over \$182,823 spent on innovative programs, patient events, supportive care and outreach.



## PROGRAMS

### Carley's Closet

---

Carley's Closet is a resource that serves the unique needs of teen and young adult cancer patients at both children and adult medical centers. RCF supplies resources and comfort items to help keep patients active and positive during their treatment. During the holiday season, RCF provides Christmas stockings to patients with age appropriate gifts as well as other comfort items.

In 2020, we continued our traditional RCF patient programs with a Covid-19 twist. Carley's Closet provided face masks, hand sanitizer, touch-less keys and gift cards for food, care items and transportation to treatment.





## EASE THE IMPACT

### Carley's Closet Locations

Baylor Scott & White/All Saints, Cook Children's Medical Center, John Peter Smith Cancer Center and Moncrief Cancer Institute in Fort Worth; Texas Center for Proton Therapy in Irving; Medical City and UT Southwestern Simmons Cancer Center in Dallas; MD Anderson and Texas Children's Hospital in Houston, Vannie Cook Children's Clinic in McAllen and St. Jude in Memphis, Tennessee.



**466**  
patients received  
New Diagnosis Bags



**182**  
patients received  
Christmas Stockings

### Fertility Preservation Program

Loss of fertility is a significant side-effect of cancer treatment for patients diagnosed during their reproductive years and a source of considerable emotional distress.

In partnership with Moncrief Cancer Institute, Rutledge Cancer Foundation helped pioneer a community-wide Onco-Fertility Preservation Program. The program includes fertility preservation education, care coordination and financial assistance for medically under-served teen and young adult cancer patients.

In 2020, our Onco-Fertility Preservation Program continued without interruption, providing virtual fertility preservation consultation and necessary in-person services as usual.



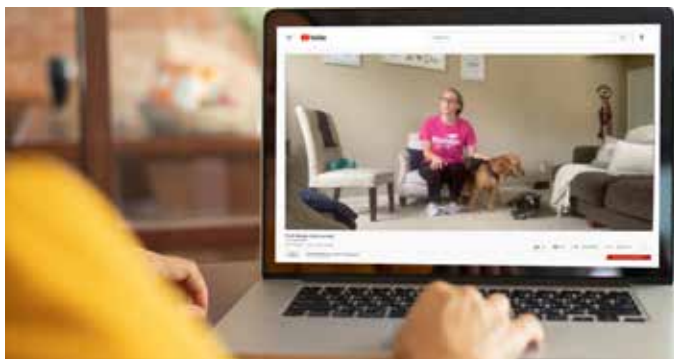
**30**  
patients were blessed  
through the Onco-Fertility  
Preservation Program



**64**  
patients participated in  
FitSteps for Life



**68**  
patients received Uber gift  
cards for transportation



## FitSteps for Life

Research has proven that cancer patients who exercise during and after treatment have better outcomes. FitSteps for Life is a free medically supervised fitness program dedicated to providing cancer patients and survivors with hope, support and education in an atmosphere of wellness. Participants of all ages receive individualized exercise plans, empowering them to lead stronger and healthier lives.

In 2020, FitSteps For Life at UNTHSC (University of North Texas Health Science Center) went virtual, as the staff moved consultations and workouts to an online format. FitSteps staff added a Facebook group and challenges to keep patients engaged.

## Transportation

Due to COVID -19, public transportation was shut down and patients were unable to get to travel to their doctor appointments. RCF bridged the transportation gap by providing over 70 rides with Uber gift cards for cancer patients at JPS Health in Fort Worth.

*"I live in Euless and I do not have a car. If it was not for the Uber gift card from the Rutledge Cancer Foundation, I would not make it to chemotherapy."*

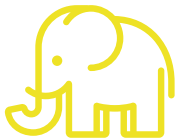


## PATIENT EVENTS

Cancer at any age is difficult, but having cancer at such a pivotal time of life is devastating. As others are charting their course in higher education, careers and relationships, these young cancer patients come to a hard stop, confronted with an uncertain future.

RCF's high quality Patient Events provide normalcy and community during a time of uncertainty and isolation for patients and their caregivers. During Covid-19, RCF's programs and events for young cancer patients were more important than ever, providing crucial emotional connections and improving physical and mental health.

Patients enjoyed RCF Day at the Rodeo before the world changed, but afterward, instead of Night at The Ranger Game, we held #PizzAYA and Zoom, a pickup pizza and online chat. RCF also sponsored patient families for Drive Through Boo At The Zoo and in early December, we sponsored PJ's and Pancakes, a take-out pancakes event, with FWAYA (Fort Worth Adolescent and Young Adult Oncology Coalition) and Cancer Care Services.



**200** patients:  
Drive Through Boo  
At The Zoo



**138** patients:  
Rutledge Day at the  
Rodeo



**52** patients:  
#PizzAYA and Zoom



**36** patients:  
PJ's and Pancakes

## SPECIAL THANKS

Special thanks to our 2020 Grantors, who kept us funded while not able to host in person fundraising events:

- AEGON/Transamerica Foundation
- Amon G. Carter Foundation
- Baylor Scott & White Health
- Communities Foundation of Texas – K.K. Meisenbach Fund
- Frost Bank
- Joni Elaine Templeton Foundation
- J.P. Morgan W.B. & Ellen Gordon Stuart Trust- Cancer
- R4 Foundation
- Thomas M., Helen McKee & John P. Ryan Foundation
- Servier Pharmaceuticals
- Sid W. Richardson Foundation

Your support during this unprecedented time allowed RCF to continue our crucial patient programs without interruption.



## FUNDRAISING EVENTS

### Hearts of Gold Giving

In lieu of our usual fundraising event that was cancelled due to COVID-19, we asked our supporters to give directly to our patient programs, research, operations or where most needed.

**RAISED:** **\$151,834**



### Coming Home at Home Virtual Benefit Concert

Each December, Rutledge faithful gather to celebrate the holidays, enjoy great music and support teens and young adults with cancer. Due to COVID-19, this year's concert was virtual on Facebook live with music from Monica Moser and Kinfolk. **The virtual concert was able to reach over 1,500 viewers from across the United States.**

**RAISED:** **\$5,085**





## THIRD-PARTY EVENTS

### Chicken Salad Chick and Carter BloodCare Giveback

Michelle Fisher, a volunteer of Rutledge Cancer Foundation (RCF) and mother of a Ewing sarcoma survivor, joined forces with other mothers of Adolescent and Young Adult cancer patients to organize a blood drive and Give-Back for RCF. Their goal was to help bridge the blood shortage at local hospitals and raise money for the foundation that gave her hope during her son's cancer treatments.

A Carter BloodCare donation bus was on site at the Chicken Salad Chick – Hurst location. Over 30 people donated blood and were tested for COVID-19 antibodies and blood type. Chicken Salad Chick – Hurst also donated 15% of the day's proceeds to RCF to support crucial patient programs, events and research.



### North Texas Giving Day

Despite all of the hardships of 2020, with the support of our devoted donors, we greatly exceeded our \$10,000 goal and were able to raise over \$34,000, including matching donations, for AYA cancer patients across Texas.





Dr. Greg Aune



## FIND A CURE

In spite of the closures due to Covid-19 in research labs across the country, including those we are working with, RCF and their team of researchers and collaborators were still able to reach significant milestones to push potential life-saving therapies forward.

### Dr. Jason Yustein, Texas Children's

Dr. Jason Yustein at Texas Children's completed the flow cytometry work that identified Ewing cell lines with varying levels of SRB1 expression on their surface. This is a key component in our lipid nanoparticle delivery as it targets SRB1 on the surface of cancer cells. These cell lines were transferred to Dr. Greg Aune's lab at Greehey Children's Cancer Research Institute for further studies in mouse models.

### Dr. Greg Aune, Greehey Children's Cancer Research Institute, San Antonio

Dr. Greg Aune at Greehey Children's Cancer Research Institute, San Antonio has completed pre-clinical studies comparing standard doxorubicin, a common chemotherapy agent that has known heart toxicities, against our encapsulated nanoparticle with two new anthracycline agents.





## FIND A CURE

The findings evaluated heart toxicity in all three drugs. The nanoparticle loaded with the two novel anthracyclines had near normal ejection fraction (heart function), while the free doxorubicin had significantly compromised heart function.

These positive results allow us to move to the next stage of studies. Dr. Aune's lab will compare numerous immune compromised xenografts and analyze both heart function and efficacy in Ewing tumors in these three drugs. The biodistribution will also be analyzed so the mechanisms of how the drugs are delivered can be assessed.

### Drs. Andras and Fudala's lab, UNTHSC

Drs. Andras and Fudala's lab at UNTHSC will continue manufacturing the two novel anthracyclines inside the Myr5a nanoparticle for the mouse model study in Dr. Aune's lab. Further work will be conducted on combining a number of novel small molecules that specifically target Ewing cells with our rHDL nanoparticle.

Our ultimate goal is to complete the small animal studies, move into large animal studies and then human clinical trials for Ewing sarcoma and other pediatric sarcomas. These milestones have taken place because of our



Dr. Dave Donahue

donors, foundations and medical centers who believe in our mission to Find A Cure.

## INTRODUCING:



## The CURE CLUB

### OUR MONTHLY GIVING CAMPAIGN!

*"In a time when medical safety is being scrutinized and politicized, I felt as though the AYA cancer patients who are already battling the most deadly disease, were being overlooked.*

*With the cost of healthcare and life in general going up, providing a little bit monthly is the least I can do to help this cause"*

*-Watt Stephens, Cure Club Member*

**To join The Cure Club, visit  
[rutledgefoundation.org](http://rutledgefoundation.org)**

## NEW: THE CURE CLUB

We're excited to share with you our new giving program, The Cure Club.

The Cure Club is RCF's monthly giving program that will help #EaseTheImpact, #RaiseTheRate, and #FindACure for our adolescent and young adult cancer population. Join The Cure Club today and help AYA cancer patients all year long.

### Why give monthly?

- **It's Affordable**— By giving monthly, you invest what makes sense for you and make an incredible impact over the course of your annual giving.
- **It's Community**— Becoming a Cure Club Member allows you to join a dedicated group of supporters who understand the importance of making a difference for young cancer patients in your community.
- **It's Sustained Support**— Monthly giving enables RCF to invest in specific areas of our work, expand patient programming, dig deeper into research and help find a cure for AYA cancer patients.
- **It's Exciting**— You will receive updates from RCF staff on upcoming events, patient stories, photos and videos to see the impact you are making.



# FINDING A CURE

*an evening with Rutledge Cancer Foundation*

**Providing Hope for Young Cancer Patients**

Honoring  
**Dr. Greg Aune, MD, PhD**

Cocktails, Silent Auction & Dinner

**Thursday, September 23, 2021**

at 6 P.M.

River Crest Country Club

This year, we are thrilled to announce Dr. Greg Aune, childhood cancer survivor, pediatric oncologist, and researcher at Greehey Children's Cancer Research Institute, as our keynote speaker.

**For sponsorship opportunities, email  
[Adrienne@Rutledgecancerfoundation.org](mailto:Adrienne@Rutledgecancerfoundation.org)**

# 2020 CONTRIBUTIONS

Our deep gratitude goes to all who give in support of our mission to  
Ease the Impact, Raise the Rate and Find a Cure.

## CORPORATE SPONSORS/DONORS

### *\$10,000 and Above*

---

Aegon Transamerica Foundation  
Amon G. Carter Foundation  
Communities Foundation  
of Texas - K.K. Meisenbach Fund  
Communities Foundation  
of Texas  
Facebook  
Joni Templeton Charitable Trust -  
Bank of America  
J. P. Morgan - W.B. & Ellen Gordon  
Stuart Trust - Cancer  
R4 Foundation  
Servier Pharmaceuticals  
Sid W. Richardson Foundation  
The Ryan Foundation

### *\$5,000 to \$9,999*

---

Alan B. Slifka Foundation  
Archer Western  
Frost Bank  
Walker Strong, Inc.

### *\$1,000 to \$4,999*

---

Air Relief Technologies, Inc.  
Baylor Scott & White All Saints  
Medical Center - Fort Worth  
Charities Aid Foundation of America  
Commonwealth Charitable Fund  
GM Financial  
John B. and Ethel Templeton Fund  
Sangalli Private Ventures  
Sawyer Law Firm, PLLC  
Structured Annuities, Inc.  
UBS Match Gift - Cyber Grant  
Kyle Kight

### *\$250 to \$999*

---

Dentistry of Fort Worth - Diana  
Raulston  
Gerrish Consulting II, LLC  
J & M CSC 002, LLC  
The Roach Foundation, Inc.

## INDIVIDUAL SPONSORS/DONORS

### *\$10,000 and Above*

---

Angie and Dave Donahue  
Fidelity Charitable - Delynn and Ted  
Crofford Charitable Fund  
Laura and John Rutledge  
Wells Fargo Clearing Services, LLC -  
Rich Family Foundation

### *\$5,000 to \$9,999*

---

Theresa and Randy Brillhart  
Fidelity Charitable - Mica Bergman  
Charitable Gift Fund  
Christina and Mark Johnson  
Kay and John Mithcell  
Debbie and Don Reynolds  
Mary Lou and John Ryan  
Schwab Charitable - Lisa and John  
Sarvadi

### *\$1,000 to \$4,999*

---

Mica Bergman  
Deepika and Harshal Broker  
Grace Lynn and Charles Curry  
Mary Jane and Crawford Edwards  
Marta and Jeff Ekberg



## 2020 CONTRIBUTIONS

Fidelity Charitable - Shawn and  
 Cindy McLaughlin  
 Fidelity Charitable - Joanne Viola  
 Family Fund  
 Alex and Michelle Fisher  
 Martha Fry  
 Marie Gallman  
 Tracy Rector and Greg Fitzgerald  
 Susie and Clark Gregg  
 Tammy and Richard Jensen  
 Sarah and Kyle Kight  
 Scott Kleberg  
 Scot Krieger  
 Stacy and Chris Kroeger  
 Bea and Dan Kutzler  
 Dr. Andras Lacko  
 Cheryle Locke  
 Charlotte and Tom Laker  
 Misty and Tim Locke  
 Phillip Marks  
 Lynn McConnell  
 Cindy and Shawn McLaughlin  
 Cindy and Sam Moser  
 Lindy and Bill Penny  
 Michelle and George Pettit  
 Jane Rector  
 Tamara and Dan Reese  
 Michele and Fred Reynolds  
 Rochester Area Community  
 Foundation - Michael and Cheryl  
 Ebertz  
 Edwin Ryan

Caroline Samis  
 Schwab Charitable - Bahr  
 Family Fund  
 Schwab Charitable - Dale Yee and  
 Dave Rutledge Donations  
 Jami and Trooper Smith  
 Mimi and Chad Stephens  
 Christy and Louis Strock  
 Allison and Bryan Wagner  
 Elisabeth and Daniel Wagner  
 Cynthia Wahl  
 Win Ryan Family Charitable  
 Fund - North Texas Community  
 Foundation

### **\$250 to \$999**

---

Emily Bailey  
 William and Whitney Beckworth  
 Benevity Community Impact  
 Fund - Lynda Post  
 Dr. AR Bhandari, MPDA  
 Lois and Paul Bowman  
 Donna and Ross Craft  
 Jan Crowley Bechtel  
 Kathy and Bill Dafcik  
 Fidelity Charitable - O'Neil Charitable  
 Fund  
 Fidelity Charitable - Rosalyn G.  
 Rosenthal  
 Jane and John Freese  
 Elizabeth and Rafael Garza

Beckie and Pete Geren  
 James Graham  
 J.P. Morgan Securities LLC - Fred  
 Antonini  
 Kitson Loerwald  
 Dori Miller  
 Cindy and Mark Milrany  
 National Christian Foundation -  
 Mary Bates  
 Michael Nichols  
 Craig Nicholson  
 Murphy and Amanda Parks  
 Beth and Steve Phillips  
 Martha and Frost Prioleau  
 Lisa and John Queralt  
 Elisa Rode  
 Katherine and Philip Sanagursky  
 Danielle Smith  
 Adrienne and Watt Stephens  
 Clare and Timothy Stonesifer  
 Valerie and Rob Watson  
 Emily Watt  
 Regal and Robert Williams  
 Cathy Wooley

# 2020 CONTRIBUTIONS

---

## In Honor

### **ANNE & BOB BASS**

Judy Lynn Jones

### **DONNA & ROSS CRAFT**

Janice and Curtis Henderson

### **VIVIAN FERGUSON**

Beth and Steve Phillips

### **LEO THOMAS HAGGART**

Nancy Haggart

### **NANCY KEE**

Elisa, Curt, Wesley, Dylan,  
and Lexi Rode

### **GRACE KIGHT**

Bahr Family

### **HANNAH RECTOR**

Tracy Rector and Greg Fitzgerald

### **MONICA MOSER**

Reagan Nunnally

### **CARLEY RUTLEDGE**

Dr. Paul and Lois Bowman  
Christopher MacHatton  
Patti Parker Peterson  
Debbie and Don Reynolds  
Jami and Trooper Smith  
Emily Watt

### **JOHN RUTLEDGE**

Amanda and Murphy Parks

### **LAURA RUTLEDGE**

Nancy Haggart

### **LAURA & JOHN RUTLEDGE**

Emily Watt

### **BILLY SMITH**

Judy Lynn Jones

### **WATT STEPHENS**

Cameron Colyer

---

## In Memory

### **JUSTIN CORBRIDGE**

Curran Corrigan  
James Eubanks  
Colin Geoghegan  
Stewart Hill  
Laura Kahle  
Kate Monroe  
Mark Phillips  
Val and Hastings Westphal  
Zareen Vaghaiwalla  
Christina Vergo

### **LILLI CURRY**

John J. Amato  
Grace Lynn and Charles Curry  
Buzzy Gardner  
Kelly and Jay Myers  
Diane Pakel

Melody Sebeck

T Kay Terry

### **ALAN EBERTZ**

Beverly Radziwon  
Katherine and Philip Sanagursky  
Kristen, Ryan, Carter and  
Griffin Sturt  
Nancee and Tom Sykes

### **BERNICE ETCOFF**

Andras Lacko  
Michele and Fred Reynolds

### **CLETA ROSE GULLETT**

Judy Lynn Jones

### **KATHERINE JONES HENDERSON**

Kristin and Stewart Henderson

### **DR. BOBBY LOWRANCE**

Theresa and Randy Brillhart

### **EDWIN W. MCCONNELL, JR.**

Lynn McConnell

### **MICHELLE ANN PARTEN**

Alexandra Constantinou

### **JEFFERY WALKER REESE**

Walker Strong, Inc.

### **AVINASH SABNIS**

Nirupama Sabnis

### **WARREN SHIPMAN**

Mimi and Chad Stephens





## LOOKING BACK ON 2020...

We could not have fulfilled our mission without your help. Thank you for helping us Ease Cancer's Impact, Raise Survival Rates, and Find a Cure!

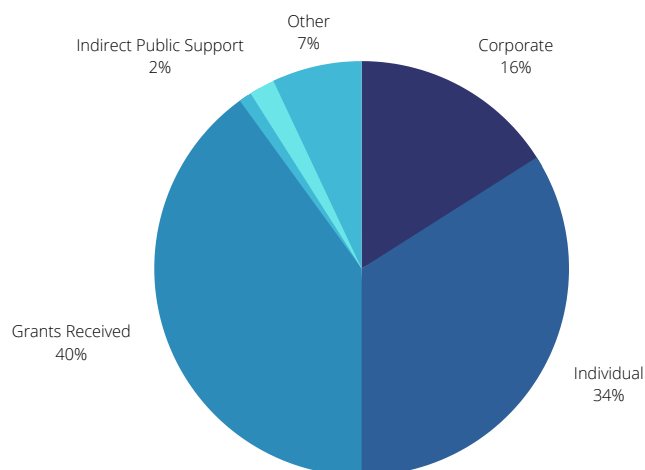


# 2020 FINANCIAL REPORT



RUTLEDGE CANCER FOUNDATION

## INCOME



Revenue	2020 Actual
General Donations	6,696.03
Events:	
HG20 Gala	10,000.00
HGGiving/NTGD Spring	173,612.31
HG19 Luncheon	1,136.79
Top Golf	7,294.00
RTR Kickball	-
Coming Home Concert	5,230.00
Restricted Donations	21,130.00
Third Party Fundraising	1,734.32
Third Party Fundraising (Restricted)	25.00
Indirect Public Support	10,510.91
Investments	763.42
Grants Received (Research, Operating and Patient Programs)	175,000.00
Other Types of Income	26,039.19
<b>Total Revenue</b>	<b>\$439,171.97</b>

Expenditures	
Operating Expenses	209,525.02
Event Expense	10,726.60
Patient Programs and Events	36,822.92
<b>Total Expenditures</b>	<b>\$257,074.54</b>

*"I just wanted to let you know how much of a life-saver Rutledge Cancer Foundation has been. My husband had to quit his job due to Covid-19 and hurting his back. I am the only income for the both of us right now... Every day I am humbled by your kindness toward us."*

*-Wife of AYA Cancer Patient*



# 2020 FINANCIAL REPORT

## Grants Funded from Current Fiscal Year Funds:

### Programs

Grants Funded (Restricted) 8,000.00

Grants Funded (Non-Restricted) 77,000.00

Programs Grants Total 85,000.00

### Research

Grants Funded (Restricted) 20,000.00

Grants Funded (Non-Restricted) 0.00

Research Grants Total 20,000.00

Total Grants Funded from CFY Funds: 105,000.00

**Net Revenue \$77,097.43**

## Grants Funded from Prior Years Funds:

### Programs

Grants Funded (Restricted) 25,000.00

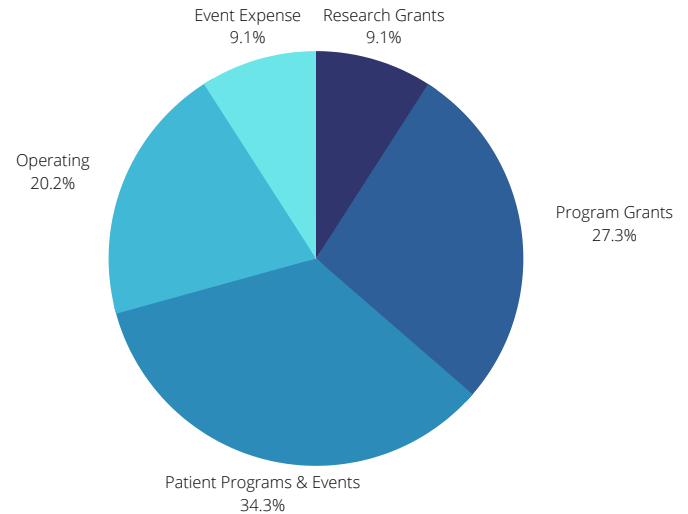
### Research

Grants Funded (Restricted) 16,000.00

**2020 Grant Expenditures Total: \$146,000.00**

## EXPENSE

WITH PAYROLL ALLOCATIONS





**RUTLEDGE**  
CANCER FOUNDATION



5608 Malvey Avenue, Suite 306  
Fort Worth, TX 76107  
682.312.5514  
[rutledgecancerfoundation.org](http://rutledgecancerfoundation.org)  
[info@rutledgecancerfoundation.org](mailto:info@rutledgecancerfoundation.org)