



RUTLEDGE CANCER FOUNDATION



RUTLEDGE CANCER FOUNDATION

SOARING
TOWARDS
A CURE

FOR AYA & CHILDHOOD CANCER

IMPACT REPORT
2025



RUTLEDGE
CANCER FOUNDATION

OUR MISSION

Works to **ease the impact** of cancer on the lives of adolescents and young adults, **raise survival rates**, and **find a cure** for sarcomas and other solid tumor cancers.





Ease the Impact

In 2025, RCF invested \$231,769 in patient programs—including Carley’s Closet, patient outings, and Caregather—serving 2,075 adolescents, young adults, and their families. These programs are designed to meet critical, often unmet emotional and physical needs throughout the cancer journey.



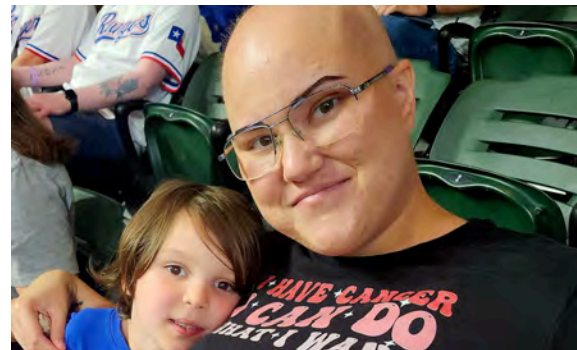
Raise Survival Rates

In 2025, we raised **\$1,208,962** to ease cancer’s impact, increase awareness and early detection, and to further research for less toxic, personalized cancer therapies.



Find a Cure

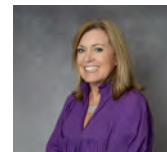
In 2025 we funded **\$183,337** in research aimed at finding a cure for solid tumor cancers.





Dear Friends,

2025 was a year of growth and momentum for the Rutledge Cancer Foundation.



This year also marked an important transition as I stepped into the role of Executive Director. I am deeply honored to lead this organization and continue building upon the extraordinary legacy the Rutledge family and friends created in honor of their daughter, Carley.

Because of the generosity of our community, RCF supported 2,075 adolescents and young adults facing cancer this year. Through programs like Carley's Closet, psychosocial support services, fertility preservation assistance, and meaningful patient events, we continue working to ensure that young people navigating cancer never have to face it alone.

At the same time, we remain committed to advancing research that will change cancer treatments and outcomes for sarcomas and other solid tumor cancers.

None of this work would be possible without our volunteers, board members, medical advisors, sarcoma researchers, donors, and community partners.

Lynn Hammer

Lynn Hammer
Executive Director



EASE THE IMPACT

In 2025, RCF was able to serve **2,075** patients and family members with **\$231,769** spent on innovative programs, patient events, supportive care, and outreach.

Carley's Closet

Carley's Closet was created in 2011 after 15-year-old Carley Rutledge experienced firsthand how isolating cancer treatment can be for teens and young adults.

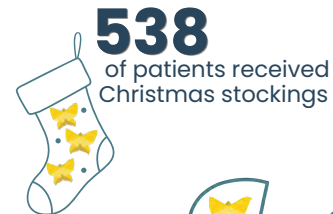
Today, Carley's Closet provides thoughtfully curated comfort bags filled with items designed to bring encouragement, dignity, and practical support to adolescents and young adults undergoing treatment.



Onco-Fertility Preservation

Loss of fertility is a significant side-effect of cancer treatment for patients diagnosed during their reproductive years and can be a source of considerable emotional distress.

Rutledge Cancer Foundation partners with Moncrief Cancer Institute, Cook Children's and MD Anderson to provide education, care coordination, and financial assistance for fertility preservation.



Psycho-Social Screening AYA Care Plan

Adolescents and young adults with cancer often face significant emotional distress.

Through partnerships with Moncrief Cancer Institute and UT Southwestern, Rutledge Cancer Foundation supports a **psychosocial screening tool** that identifies distress during oncology visits and connects patients with personalized care plans.



RCF PATIENT PROGRAMS

Caregather

CareGather is an online platform that helps families organize support during cancer treatment. Patients can share updates, coordinate meal trains, request help, and receive gift cards— all in one place.

The platform helps loved ones show up in meaningful ways during one of life's most difficult moments.

Caregather 

Powered by Rutledge Cancer Foundation

Travel Assistance for First Descents Scholarship Recipients


Provides life-changing outdoor adventures for young adults impacted by cancer.

Rutledge Cancer Foundation helps remove travel barriers through scholarships funded by the Wyatt Donahue and Lawson Penny Memorial Funds.

6 patients received travel scholarships for First Descents Adventures 

ForeverFit

ForeverFit is a medically supervised fitness program dedicated to providing cancer patients and survivors with education, support, and most importantly, hope for a healthier future.

63 patients participated in personalized exercise 

Patient Outings

Life during and after cancer is especially difficult for adolescents and young adults, Patients try to maintain a “normal” life but suffer from long-lasting and life-changing issues. These stressors often cause added isolation and depression, affecting overall health and patient outcomes, RCF's patient outings are designed to bring young patients and their families together to help them forget about their cancer for a while and give them a sense of community with others who understand.

 **400** AYA cancer patients host at RCF outings



FIND A CURE

Since 2011, the Rutledge Cancer Foundation has invested over **\$2.1 million** in research studies and clinical trials for solid tumor cancers—advancing treatments designed to be less toxic and more effective for adolescents and young adults. This investment continues to drive strong clinical momentum across sarcoma-focused programs, supporting active trials, protocol refinements based on early data, and translational research progressing toward first-in-human studies.

Pre-Clinical Research

ACES Grant – Accelerating Cures for Ewing sarcoma

A \$1.5 million collaborative research initiative over 3 years supported by five foundations to develop an immunotherapy vaccine for Ewing sarcoma. Led by Dr. Brian Ladle (Johns Hopkins) and the NIH research team.

Researchers are focused on safety, immune activation, and biomarker development to inform a future first-in-human vaccine trial. The vaccine-based immunotherapy combined with checkpoint inhibitors stimulates the immune system to attack cancer cells.



\$1.5M

Invested in pre-clinical research

Trials

PEEL-224 Trial (Phase 1b)

A novel nanoparticle chemotherapy combined with vincristine and temozolomide is being evaluated for AYA patients with Ewing sarcoma and DSRCT. Designed to reduce toxicity and time in the hospital, Phase 1 is nearing completion with Phase 2 to follow (60 patients over 12–24 month).

Tumor-Targeted IL-12 T Cell Therapy (Phase 1)

Modified T cells deliver IL-12 directly to tumors to boost immune response in advanced sarcomas. The trial is showing strong immune activation to fight the cancer cells. The refined protocol is now approved and open for enrollment, with RCF funding supporting immune monitoring and patient care. This trial advances more precise, personalized treatment approaches for hard to treat sarcomas.

ZAMBONE Trial – Zanzalintinib (Phase II)

A sponsor-approved Phase II trial for advanced or metastatic bone sarcomas has reopened after dosing refinements and receipt of the updated drug formulation—expanding options for patients with limited treatments available.



3

RCF supported clinical trials.

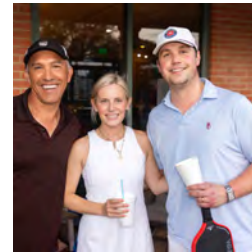
FUNDRAISING EVENTS

We host two signature events – Hearts of Gold Dinner and Auction and Paddling Out Cancer Pickleball Tournament. These events not only help to fund our mission but also raise awareness of our vision of building a brighter future for adolescent and young adult cancer patients and survivors.



Event Co- Chairs: Wendy and James Hunsaker
Kimberly and Paul Keiper

Raised over: \$495,000



 RUTLEDGE CANCER FOUNDATION

PICKLEBALL
PADDLING OUT CANCER

Event Co- Chairs: Jamie and Les Kries
Kathryn and Chris Oldham

Raised over: \$70,000





THIRD-PARTY EVENTS

In addition to our two large fundraisers, we also host a number of smaller events throughout the year.



Denver Colfax Marathon

2025 was our 4th year to participate in the this fun weekend packed with eight different races, live music and a food and beer garden. We had more than 100 runners and raised over **\$7,000** in support of our two Carley's Closets at Children's Hospital of Colorado and Rocky Mountain Children's Hospital.



Butterfly Campaign

In recognition of Pediatric Cancer Awareness Month in September, 100 supporters and sponsors purchased Butterfly signs to place in their yards raising over **\$2,000**.



Greatest Gift Catalog Ever

RCF was one of the 26 non-profits featured in the Greatest Gift Catalog Ever (GGCE) this holiday season. GGCE partnered with the Shops at Clearfork to make supporting charities easy, combining giving back with family photos with Santa. We received **\$15,531** in donations through this partnership.



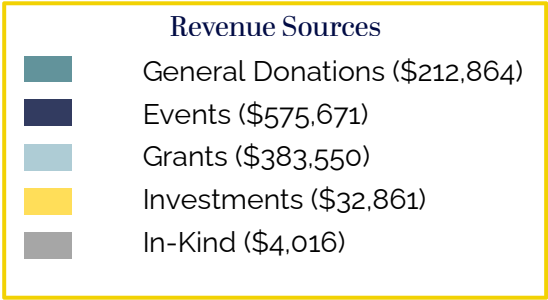
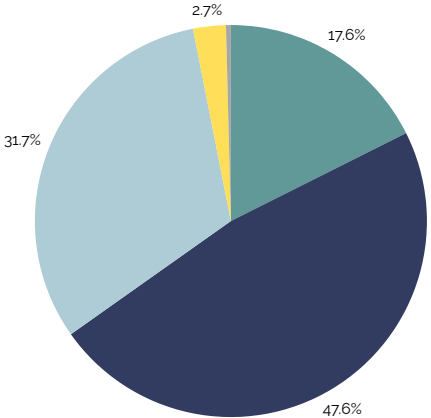
Corbash

RCF teamed up with Justin's Corbash, a tailgating event, at the Florida vs Texas game in September honoring the life of Justin Corbridge and his courageous battle with Ewing Sarcoma. It began as a way for friends to celebrate Justin's love of football and friends and has now grown into a meaningful tradition supporting RCF, raising **\$32,824**.

2025 FINANCIAL REPORT

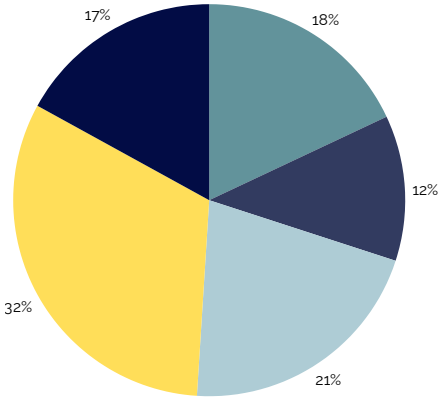
RCF Revenue Breakdown

Total Revenue: \$1,208,962



RCF Expense Breakdown

Total Expenses: \$1,094,172





LEADERSHIP

Board of Directors

John Rutledge
President

Cindy McLaughlin
Vice President

Lisa Williams Sarvadi
Treasurer

Erin Esterlein
Secretary

Laura Rutledge
Research Director

Board Members

Michael Brown
John Bunn
Molly Mitchell King
Elisa Rode
Christine Rosko
Grant Rutledge
Dana Sager
Micah Stateson
Greg Wolford

Medical Advisory Board

Medical Advisors

Alex Bishop, D. Phil
Felice Adler-Shohet, MD
James Graham, CFA
Jason Yustein, MD, PhD



Our Team

Lynn Hammer – Executive Director
Adrienne Stephens – Development Director
Melissa Tapp – Events Manager
Madison Russell Martinez – Operations Manager
Lauren Goodpaster – Patient Programs Manager



RUTLEDGE CANCER FOUNDATION

Stay Connected with us on social



5608 Malvey Avenue, Suite 306 • Fort Worth, TX 76107 • 682.312.5514
rutledgecancerfoundation.org • info@rutledgecancerfoundation.org

Rutledge Cancer Foundation is a 501(c)(3) Public Charity Under Federal Tax Guidelines: Tax ID 27-5035852